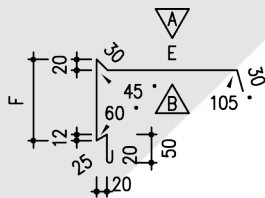


KT-ORT 01

Verge profile:

Cut: s.Tab.mm

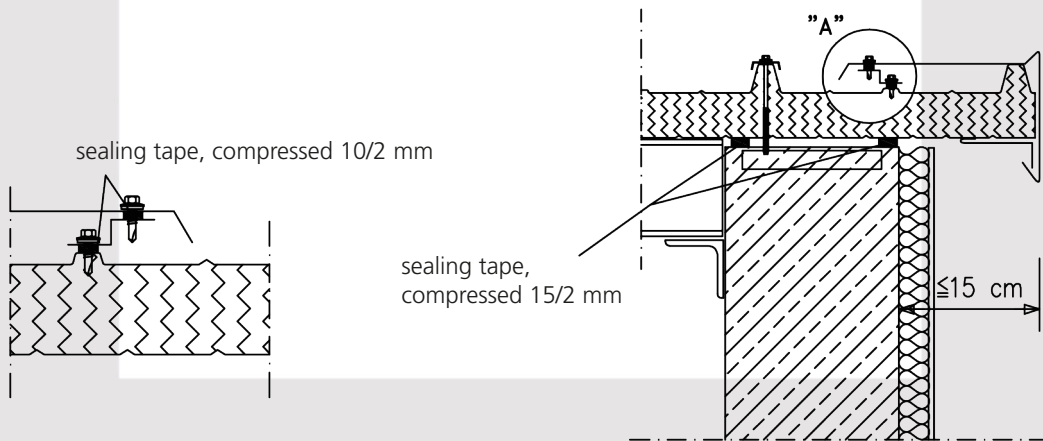
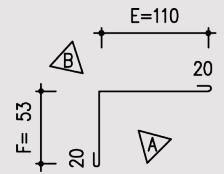


KT-ORT 01/+ Code											
Thickness of insulation		30	40	50	60	80	100	120	150		
Code		3	4	5	6	8	10	12	15		
E					234	234	234	234	357		
F					160	160	221	221	250		
Z					549	549	610	610	732		

KT-ORT 12

Covering profile

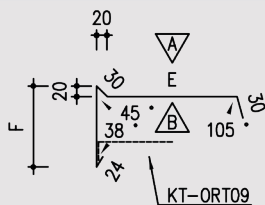
Cut: 203 mm



KT-ORT 03

Verge profile

Cut: s.Tab.mm

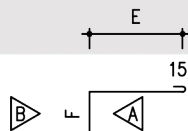


KT-ORT 03/+ Code											
Thickness of insulation		30	40	50	60	80	100	120	150		
Code		3	4	5	6	8	10	12	15		
E					239	239	239	239	357		
F					185	185	226	226	250		
Z					508	508	549	549	732		

KT-ORT 09

Covering profile

Cut: s.Tab.mm

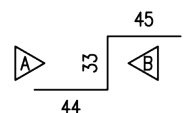


KT-ORT 09/+ Code											
Thickness of insulation		30	40	50	60	80	100	120	150		
Code		3	4	5	6	8	10	12	15		
E					128	119	128	119	153		
F					60	40	60	40	35		
Z					203	174	203	174	203		

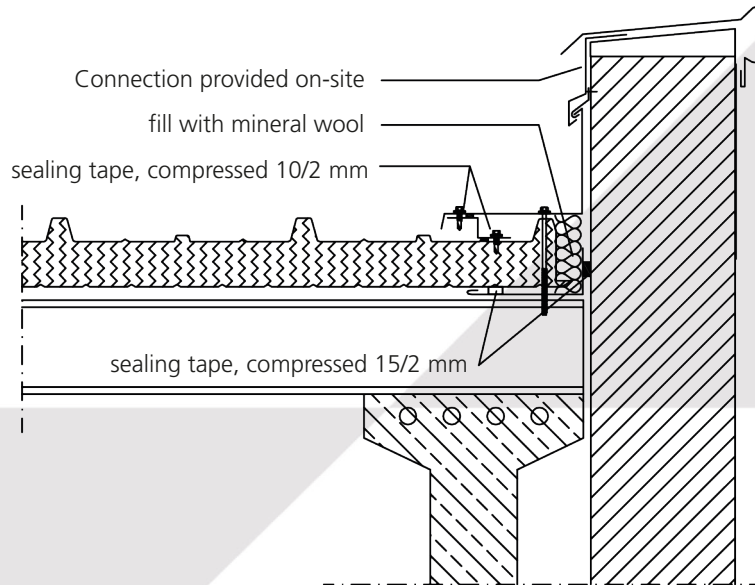
KT-ORT 07

Compensation profile

Cut: 122 mm

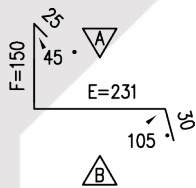


Subject to change without further notice * As of August 2020



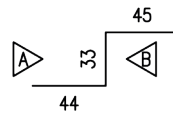
KT-DAN 10

Roof connection profile
Cut: 436 mm



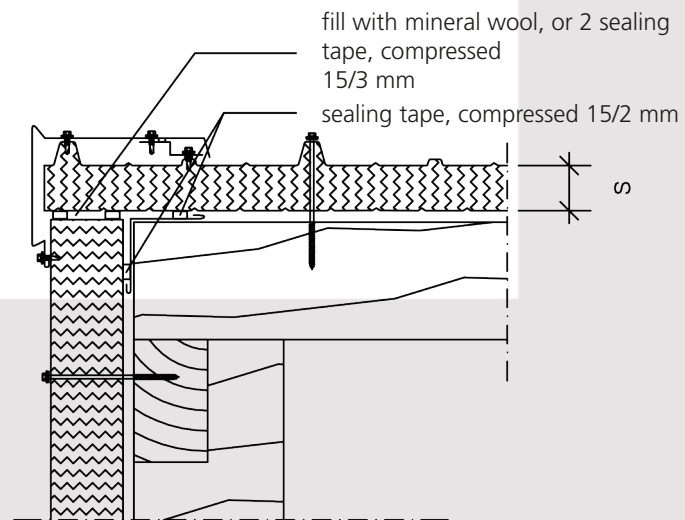
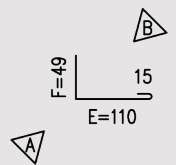
KT-ORT 07

Compensation profile
Cut: 122 mm



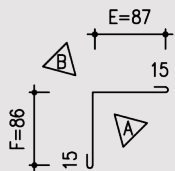
KT-ORT 14

Covering profile
Cut: 174 mm



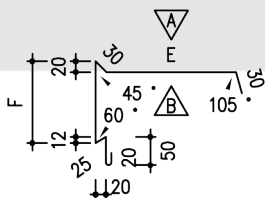
KT-ORT 13

Covering profile
Cut: 203 mm



KT-ORT 01

Verge profile
Cut: s.Tab.mm

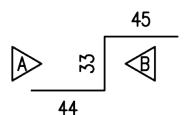


KT-ORT 01/+ Code

Thickness of insulation	30	40	50	60	80	100	120	150
Code	3	4	5	6	8	10	12	15
E				234	234	234	234	357
F				160	160	221	221	250
Z				549	549	610	610	732

KT-ORT 07

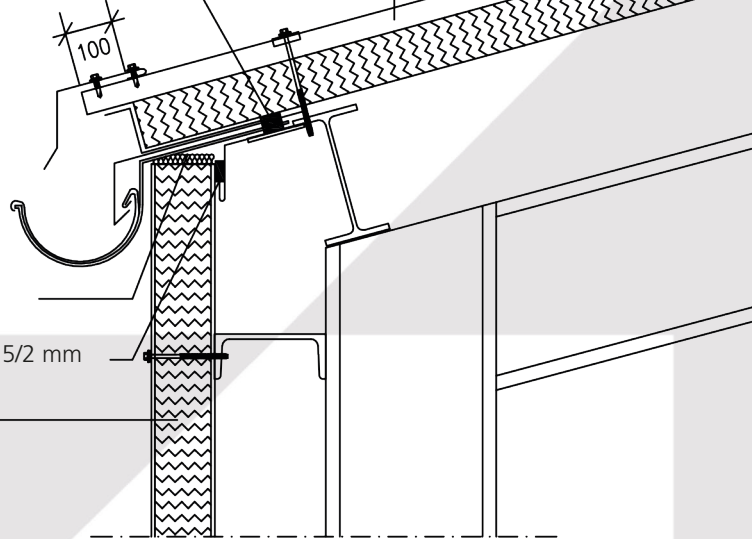
Compensation profile
Cut: 122 mm



Subject to change without further notice * As of August 2020

Hipertec Roof-panel

sealing tape, compressed 15/3 mm



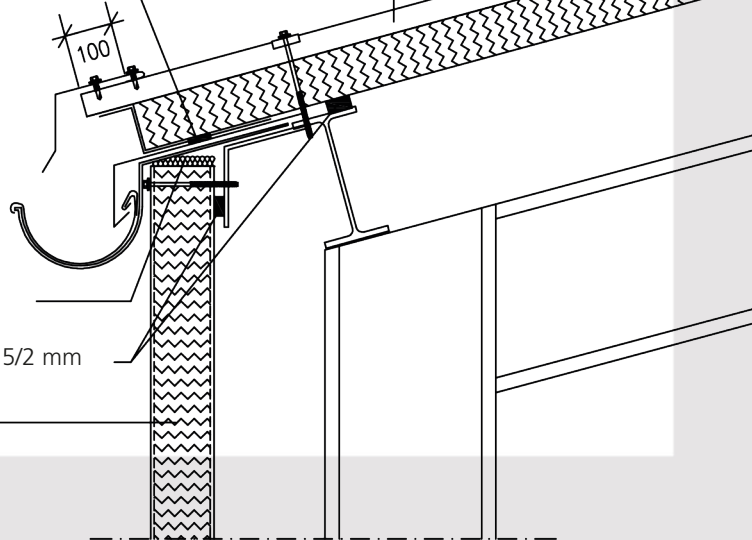
fill with mineral wool

sealing tape, compressed 15/2 mm

wall panel

Hipertec Roof-panel

sealing tape, compressed 15/3 mm



fill with mineral wool

sealing tape, compressed 15/2 mm

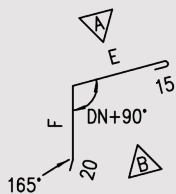
wall panel

Subject to change without further notice * As of August 2020

KT-TRA 05

Deflecting profile

Cut: s.Tab.mm

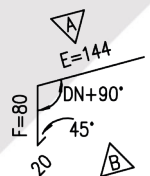


KT-TRA 05/+ Code	
Thickness of insulation	30 40 50 60 80 100 120 150
Code	3 4 5 6 8 10 12 15
E	119 160 140 120 191
F	90 110 130 150 180
Z	244 305 305 305 406

KT-TRA 01

Drip profile

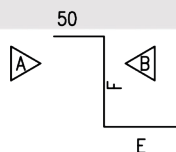
Cut: 244 mm



KT-TRA 02

End profile

Cut: s.Tab.mm

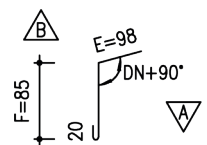


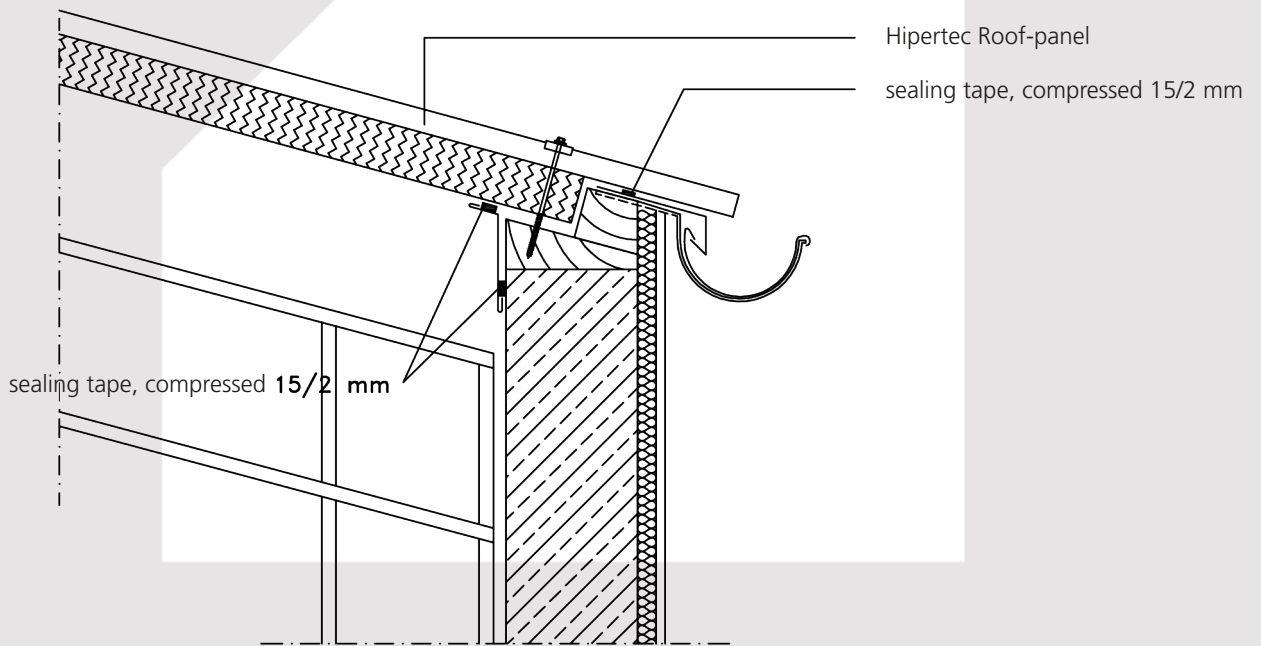
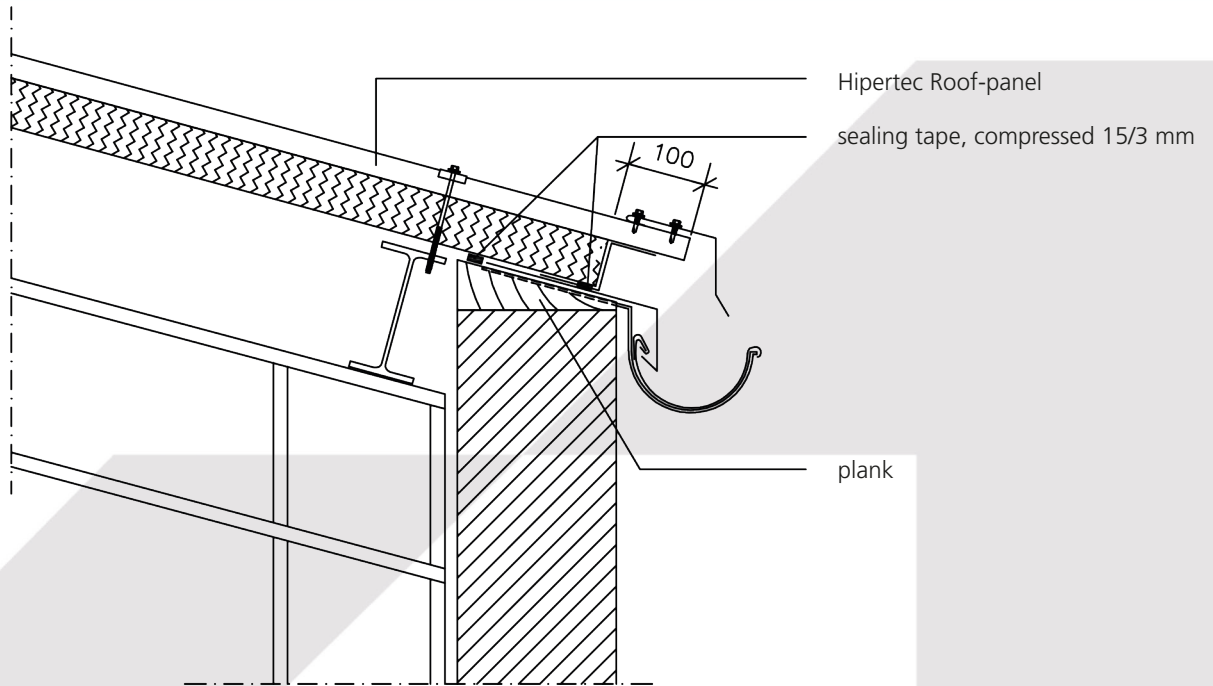
KT-TRA 02/+ Code	
Thickness of insulation	30 40 50 60 80 100 120 150
Code	3 4 5 6 8 10 12 15
E	64 73 94 74 105
F	60 80 100 120 150
Z	174 203 244 244 305

KT-TRA 09

Covering profile

Cut: 508 mm



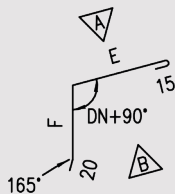


Subject to change without further notice * As of August 2020

KT-TRA 05

Deflecting profile

Cut: s.Tab.mm

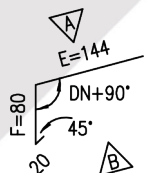


KT-TRA 05/+ Code									
Thickness of insulation	30	40	50	60	80	100	120	150	
Code	3	4	5	6	8	10	12	15	
E					119	160	140	120	191
F					90	110	130	150	180
Z					244	305	305	305	406

KT-TRA 01

Drip profile

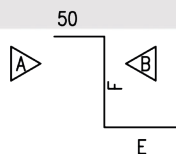
Cut: 244 mm



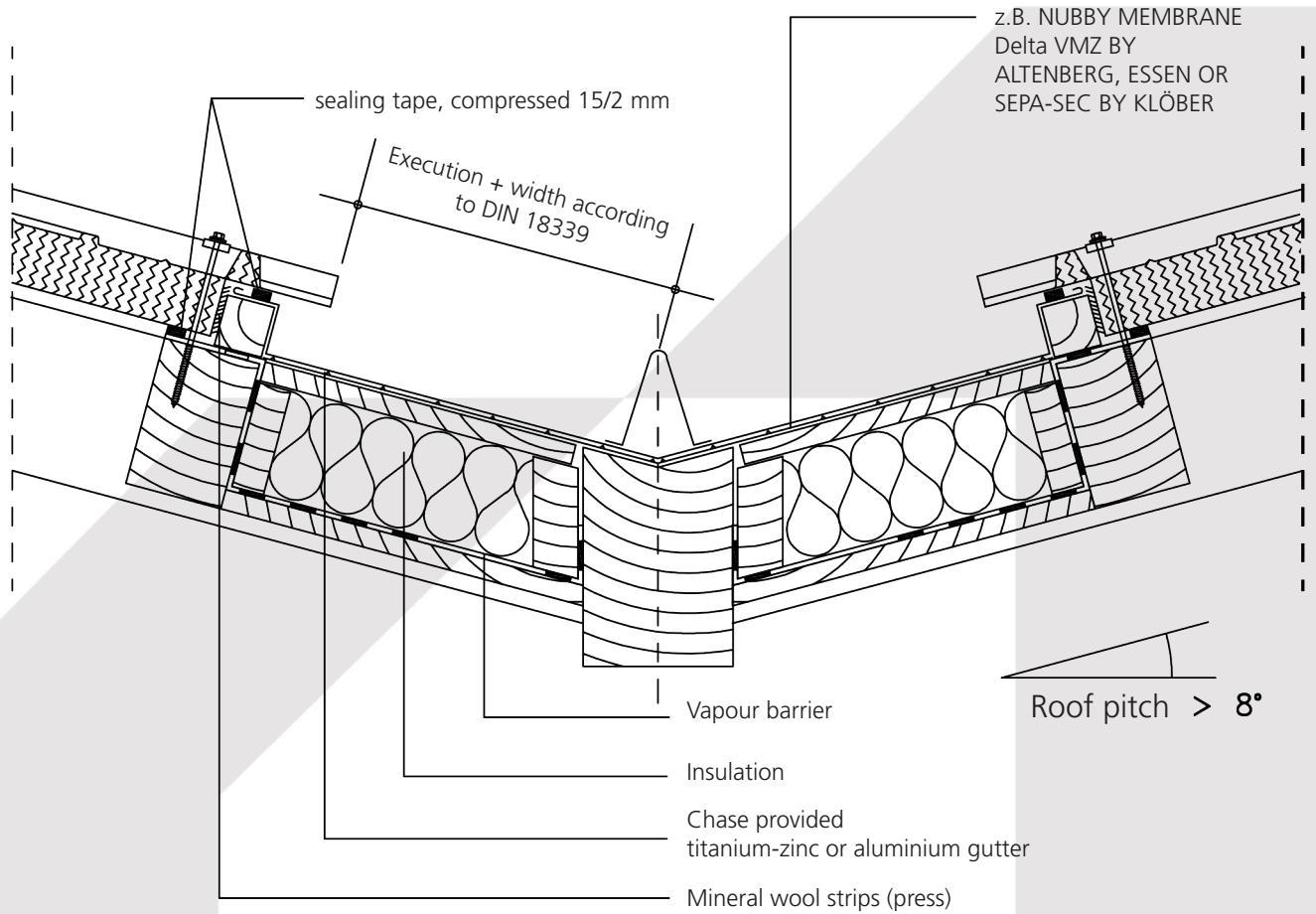
KT-TRA 02

End profile

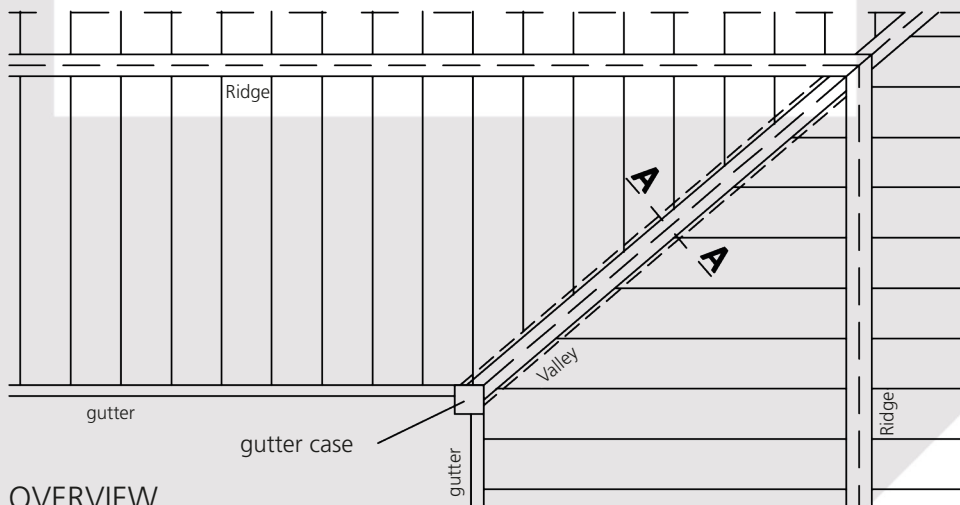
Cut: s.Tab.mm



KT-TRA 02/+ Code									
Thickness of insulation	30	40	50	60	80	100	120	150	
Code	3	4	5	6	8	10	12	15	
E					64	73	94	74	105
F					60	80	100	120	150
Z					174	203	244	244	305

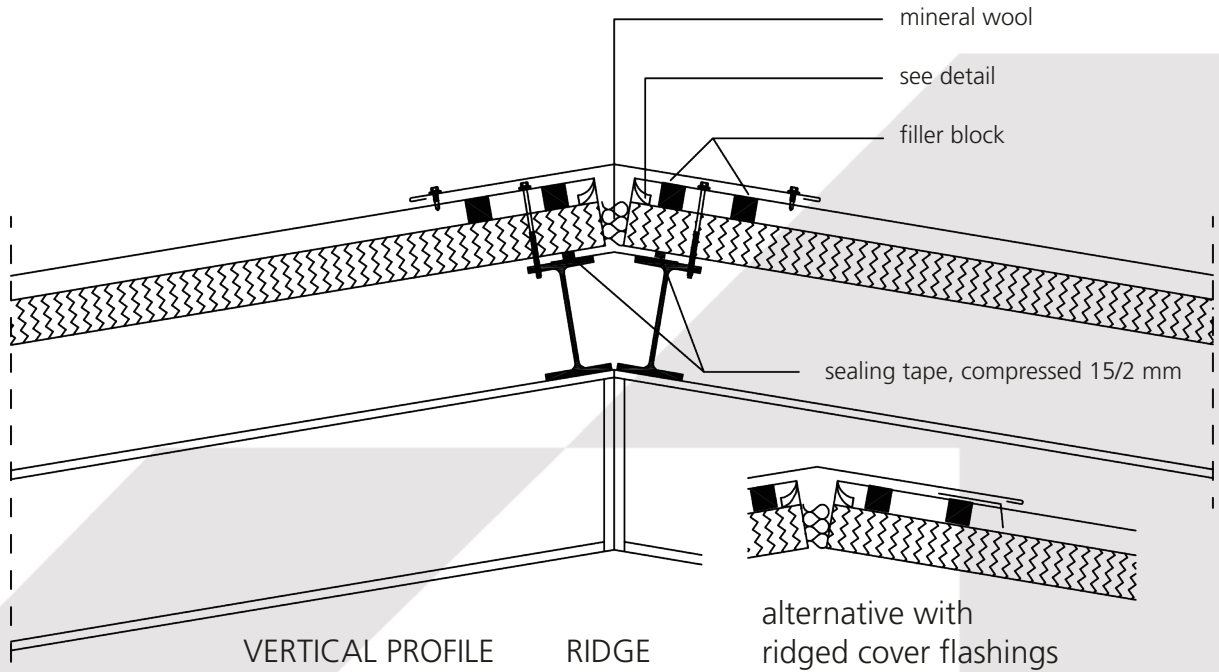


CUT A - A



OVERVIEW

Subject to change without further notice * As of August 2020



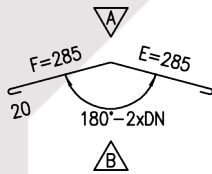
KT-FIR 01

Not in aluminium

KT-FIR 04

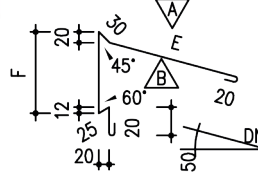
Ridge profile

Cut: 610 mm



Monopitch-ridge profile

Cut: s.Tab.mm

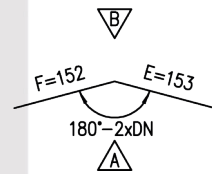


KT-FIR 04/+ Code								
Thickness of insulation	30	40	50	60	80	100	120	150
Code	3	4	5	6	8	10	12	15
E				244	244	244	244	357
F				160	160	221	221	250
Z				549	549	610	610	732

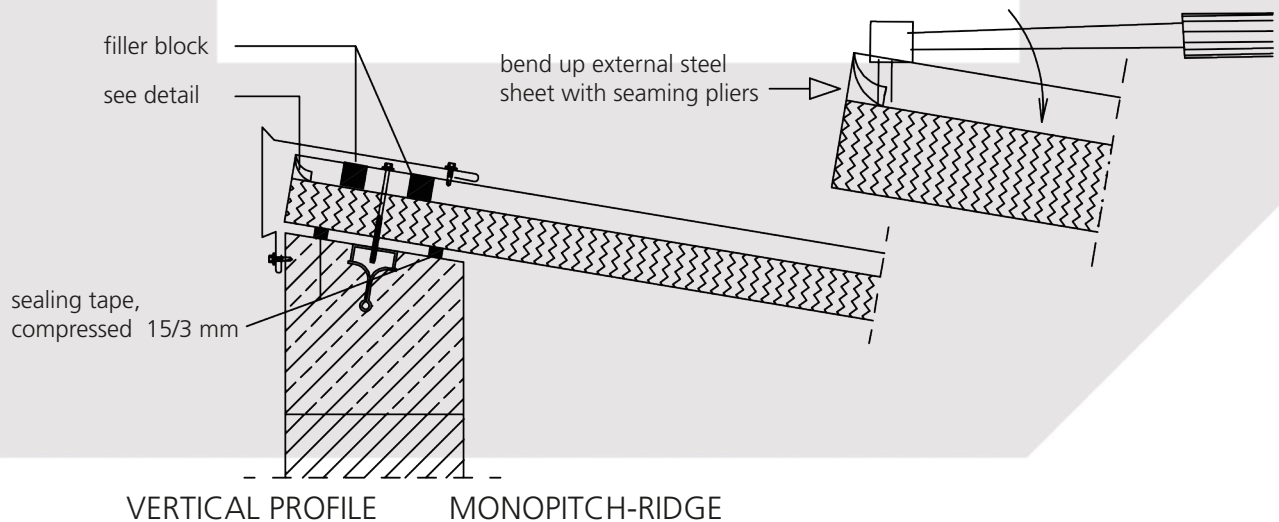
KT-FIR 10

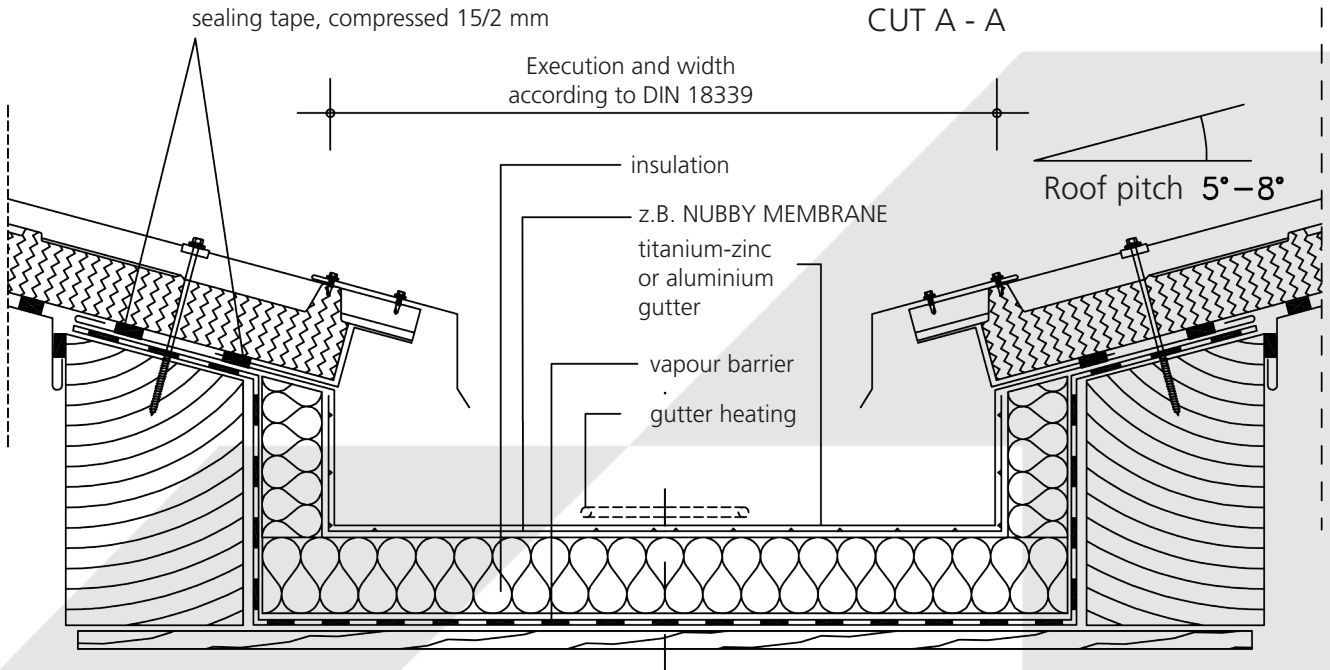
Ridge cover

Cut: 305 mm



Subject to change without further notice * As of August 2020

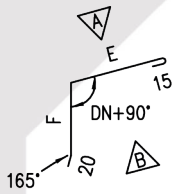




KT-TRA 05

Deflecting profile

Cut: s.Tab.mm



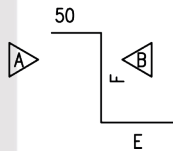
KT-TRA 05/+ Code

Thickness of insulation			60	80	100	120	150
Code			6	8	10	12	15
E			119	160	140	120	191
F			90	110	130	150	180
Z			244	305	305	305	406

KT-TRA 02

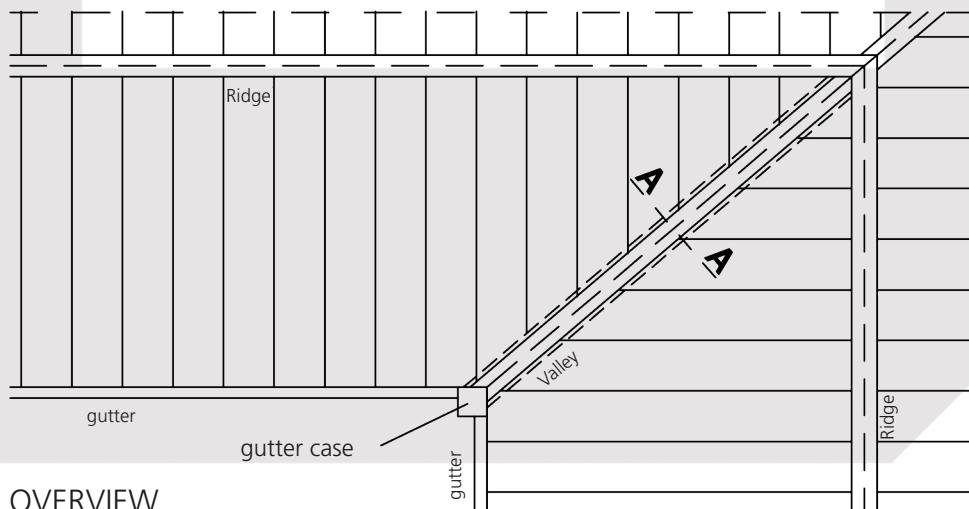
End profile

Cut: s.Tab.mm



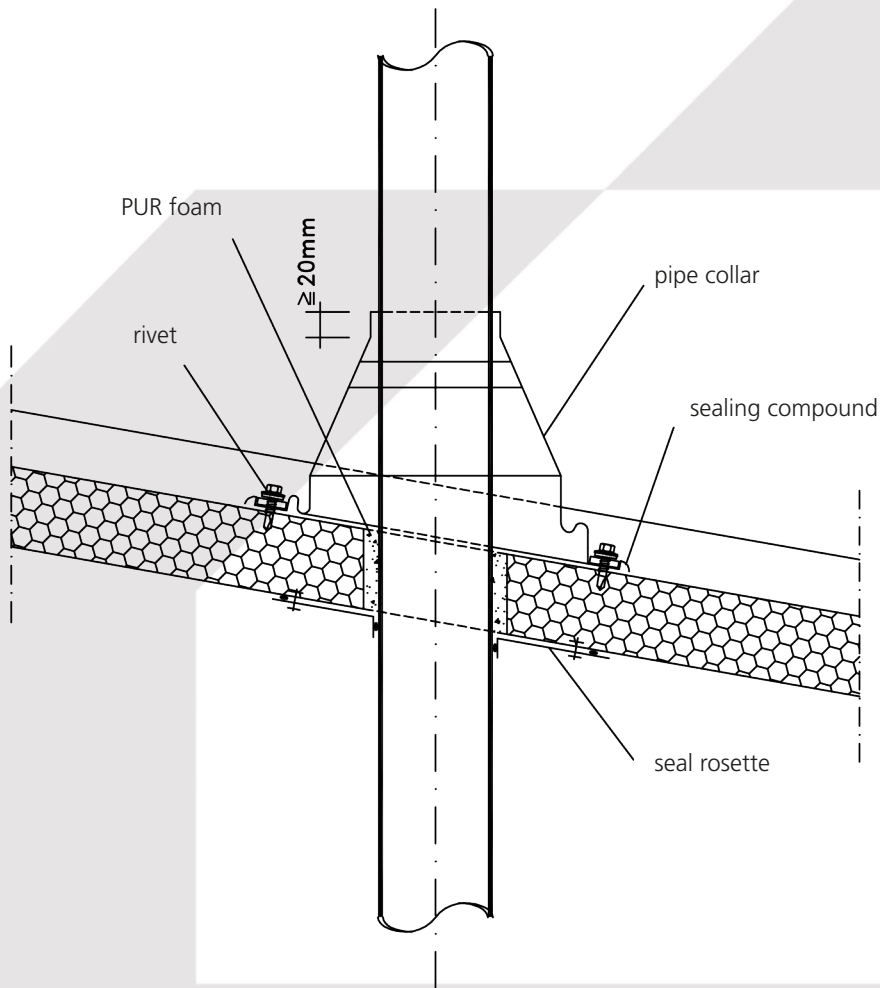
KT-TRA 02/+ Code

Thickness of insulation			60	80	100	120	150
Code			6	8	10	12	15
E			64	73	97	74	105
F			60	80	100	120	150
Z			174	203	244	244	305

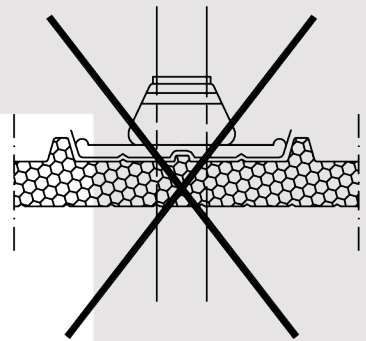


OVERVIEW

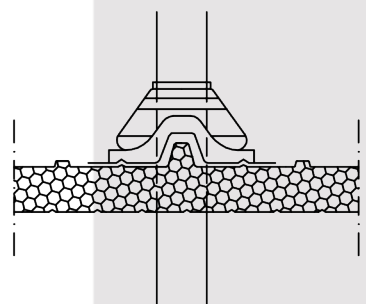
Subject to change without further notice * As of August 2020

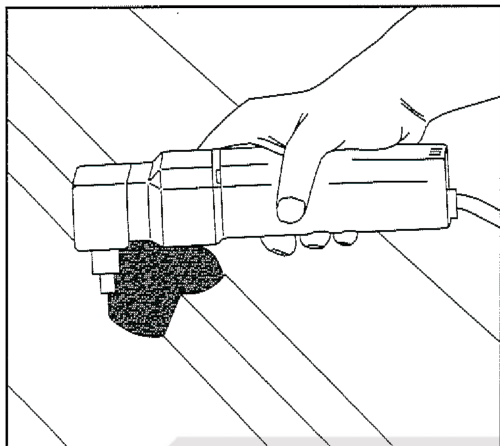


NOT LIKE THIS ...

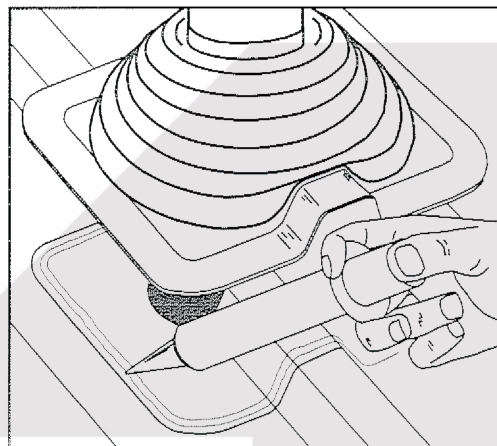


... LIKE THIS!

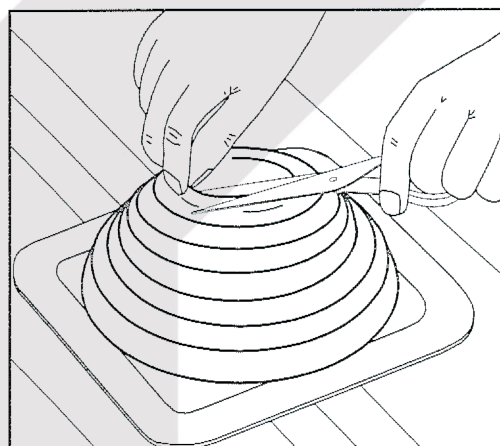




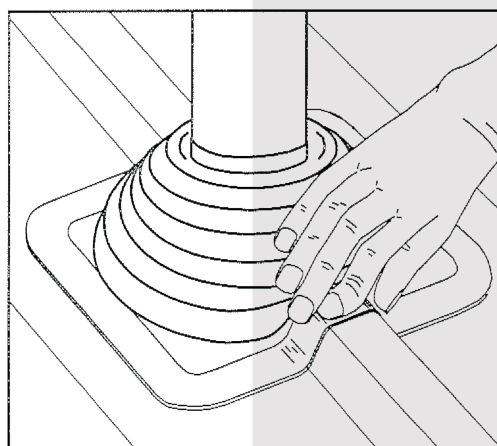
1 Provide pipe opening. Always install the pipe collar at the high rib to prevent obstructing the water flow.



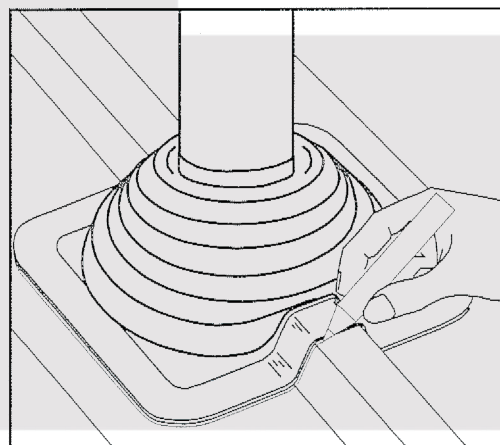
4 Apply sealing compound within the markings.



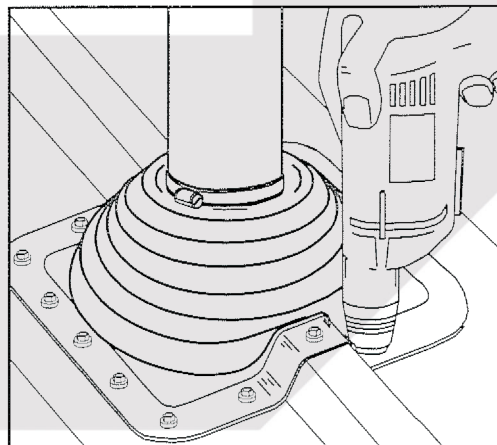
2 Adjust collar at the pipe. Cut the opening min. 25 mm smaller than the diameter of the pipe, in order to get an overlapping of about 20 mm at the pipe.



5 Position the collar press onto the surface of the roof profile.



3 Pull the pipe collar over the pipe – lubricate with soap if necessary. Adjust collar at roof profile and mark at the outer edge.



6 Screw together pipe collar and the G4 external sheet; distance between screws = 50 mm. Assemble pipe bracket