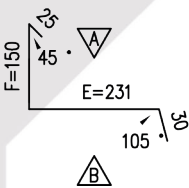


VERTICAL PROFILE

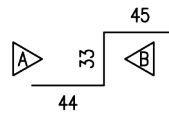
KT-DAN 10

Roof connection profile
Amount: pc.
Cut: 436 mm



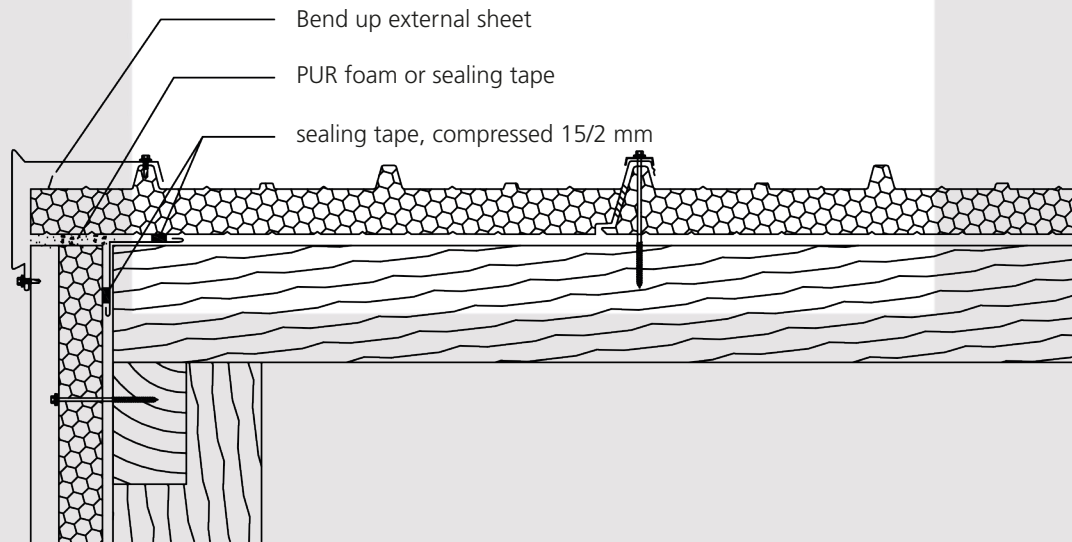
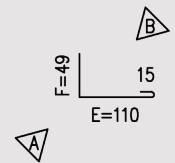
KT-ORT 07

Compensation profile
Amount: pc.
Cut: 122 mm



KT-ORT 14

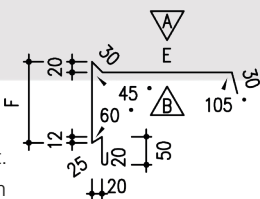
Covering profile
Amount: pc.
Cut: 174 mm



VERTICAL PROFILE

KT-ORT 01

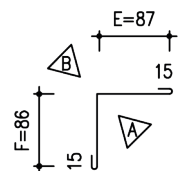
Verge profile
Amount: pc.
Cut: s.Tab. mm



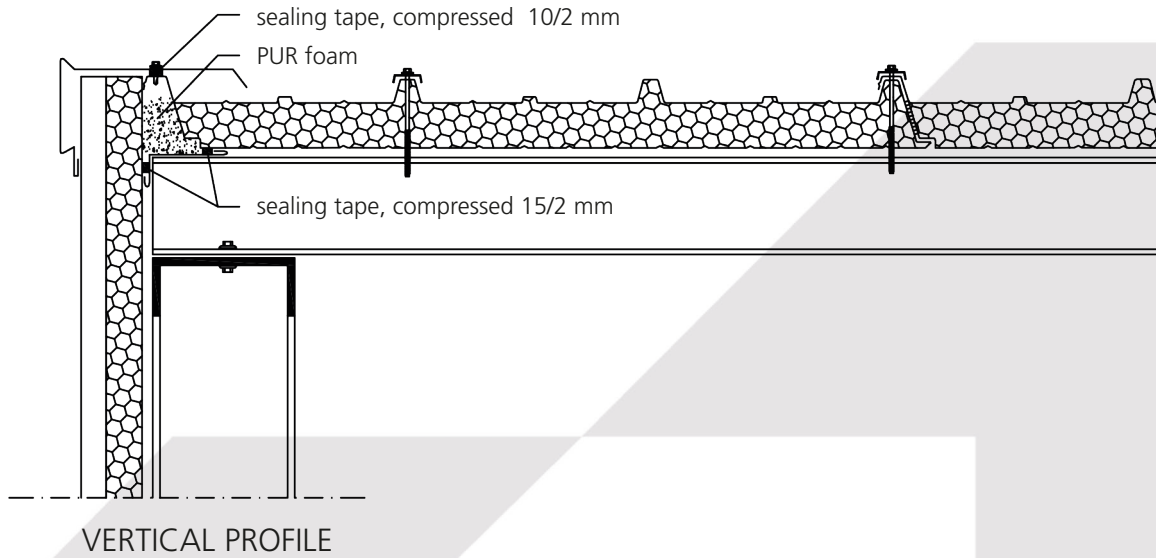
KT-ORT 01/+ Code	Code					
Thickness of insulation	30	40	50	60	80	100
Code	3	4	5	6	8	10
E	234	234	234	234	234	234
F	160	160	160	160	160	221
Z	549	549	549	549	549	610

KT-ORT 13

Covering profile
Amount: pc.
Cut: 203 mm



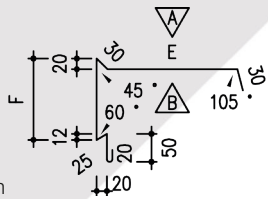
Subject to change without further notice * As of August 2020



KT-ORT 01

Verge profile

Cut: s.Tab.mm

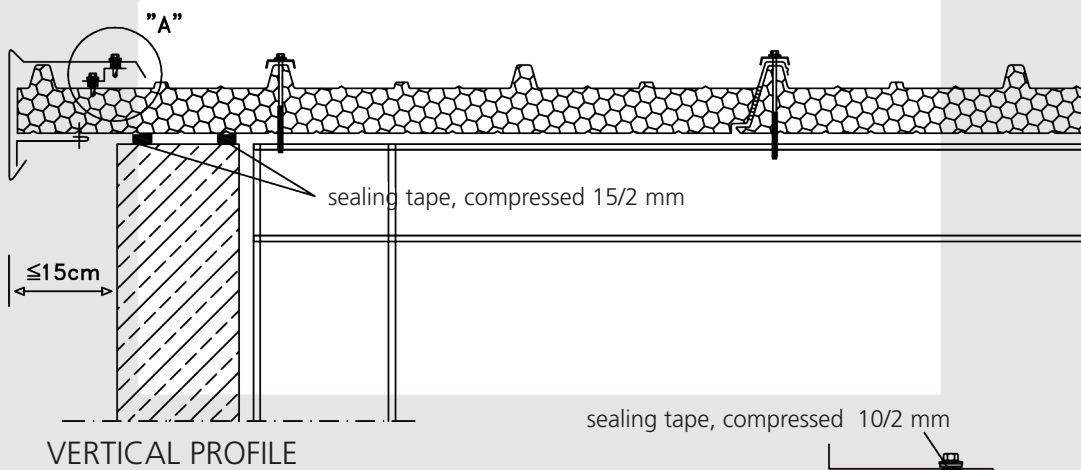
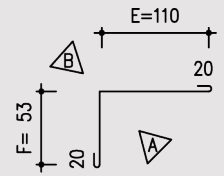


KT-ORT 01/+ Code						
Thickness of insulation	30	40	50	60	80	100
Code	3	4	5	6	8	10
E	234	234	234	234	234	234
F	160	160	160	160	160	221
Z	549	549	549	549	549	610

KT-ORT 12

Covering profile

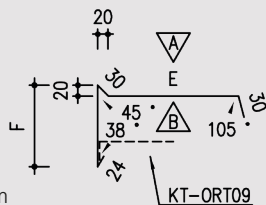
Cut: 203 mm



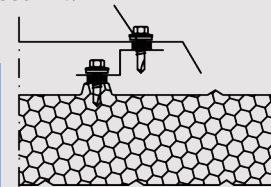
KT-ORT 03

Verge profile

Cut: s.Tab.mm



KT-ORT 03/+ Code						
Thickness of insulation	30	40	50	60	80	100
Code	3	4	5	6	8	10
E	239	239	239	239	239	239
F	185	185	185	185	185	226
Z	508	508	508	508	508	549

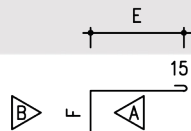


DETAIL POINT „A“

KT-ORT 09

Connection profile

Cut: s.Tab.mm

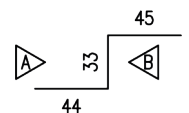


KT-ORT 09/+ Code						
Thickness of insulation	30	40	50	60	80	100
Code	3	4	5	6	8	10
E	98	108	118	99	119	128
F	90	80	70	60	40	60
Z	203	203	203	174	174	203

KT-ORT 07

Compensation profile

Cut: 122 mm



Subject to change without further notice * As of August 2020

roof panel G4
sealing tape
compressed 15/3 mm

sealing tape
compressed 15/3 mm

sealing tape
compressed 15/2 mm

wall panel MW

roof panel G4
sealing tape compressed 15/3 mm and
sealing tape compressed 15/2 mm

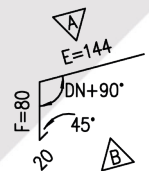
sealing tape compressed 15/3 mm
sealing tape compressed 15/2 mm

wall panel MW

KT-TRA 01

Drip profile

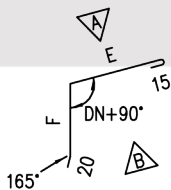
Cut: 244 mm



KT-TRA 05

Deflection profile

Cut: s.Tab.mm



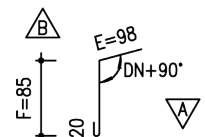
KT-TRA 05/+ Code

Thickness of insulation	30	40	50	60	80	100
Code	3	4	5	6	8	10
E	108	139	129	119	160	140
F	60	70	80	90	110	130
Z	203	244	244	244	305	305

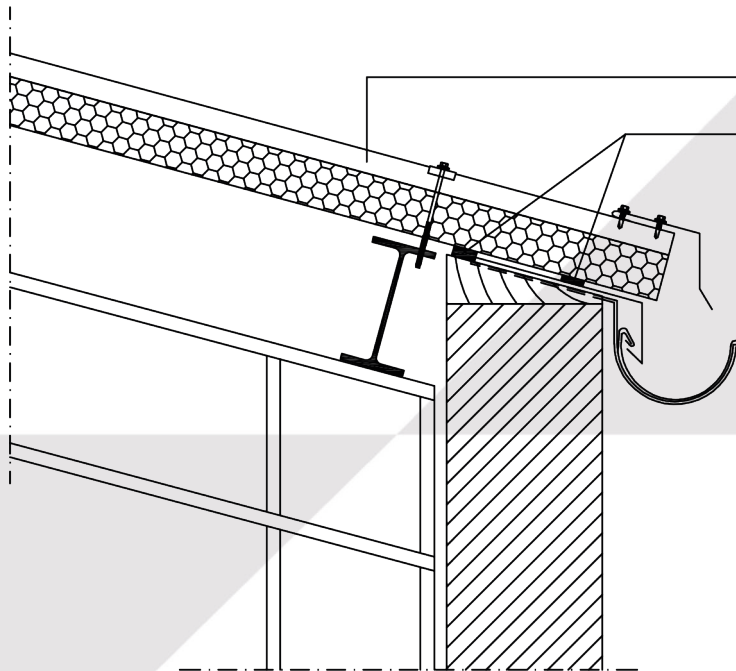
KT-TRA 09

Covering profile

Cut: 203 mm



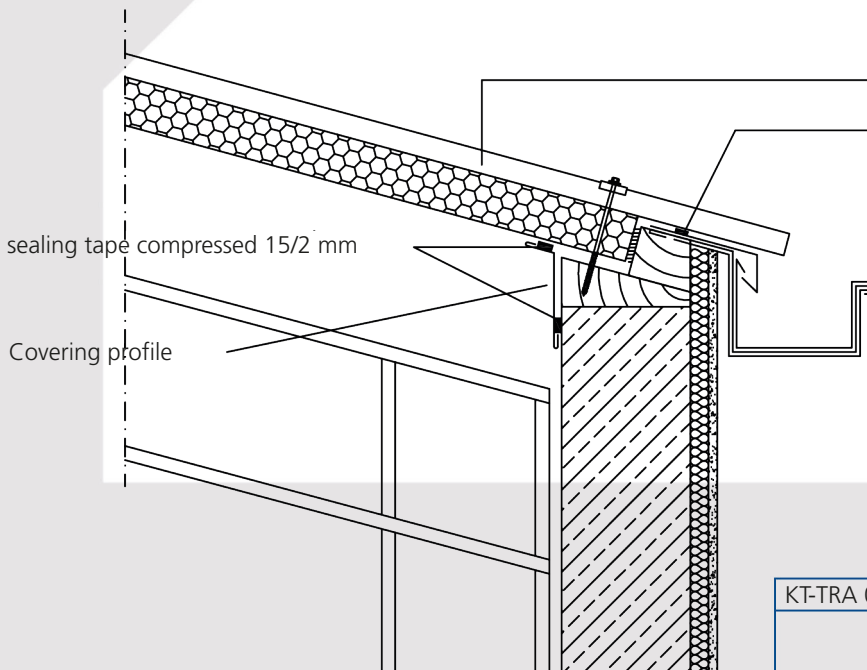
Subject to change without further notice * As of August 2020



roof panel G4

sealing tape
compressed 15/2 mm

VERTICAL PROFILE



roof panel G4

sealing tape
compressed 15/2 mm

sealing tape compressed 15/2 mm

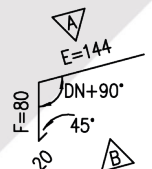
Covering profile

VERTICAL PROFILE

KT-TRA 01

Drip profile

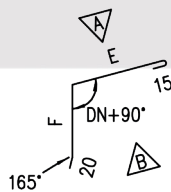
Cut: 244 mm



KT-TRA 05

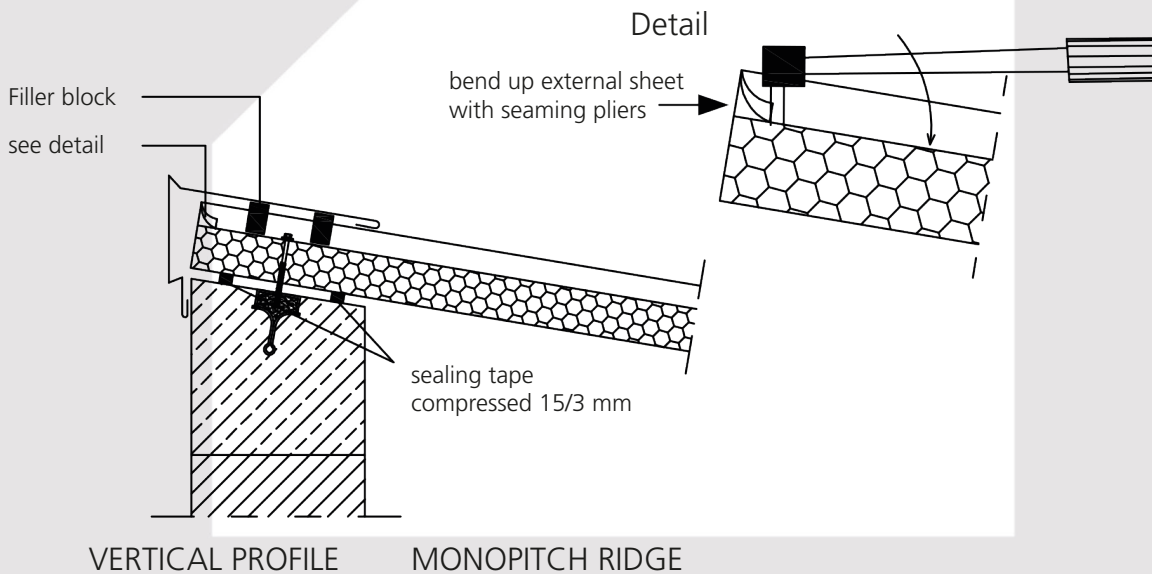
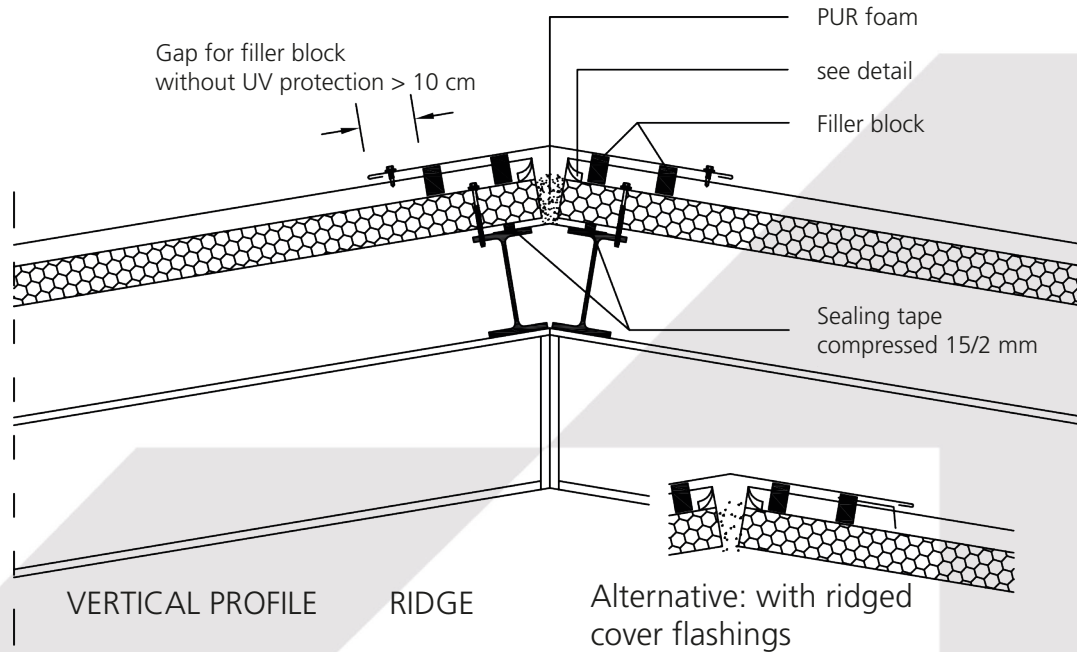
Deflection profile

Cut: s.Tab.mm



KT-TRA 05/+Code

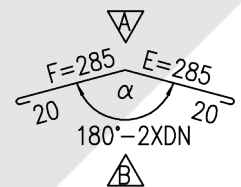
Thickness of insulation	30	40	50	60	70	80	100
Code	3	4	5	6	7	8	10
E	108	139	129	119	109	160	140
F	60	70	80	90	100	110	130
Z	203	244	244	244	244	305	305



KT-FIR 01

Ridge profile

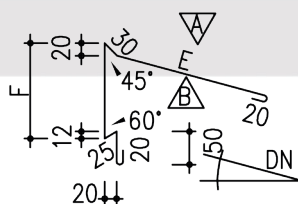
Cut: 610 mm



KT-FIR 04

Monopitch-ridge profile

Cut: s.Tab.mm

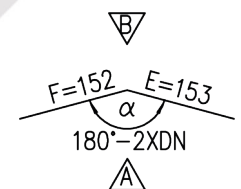


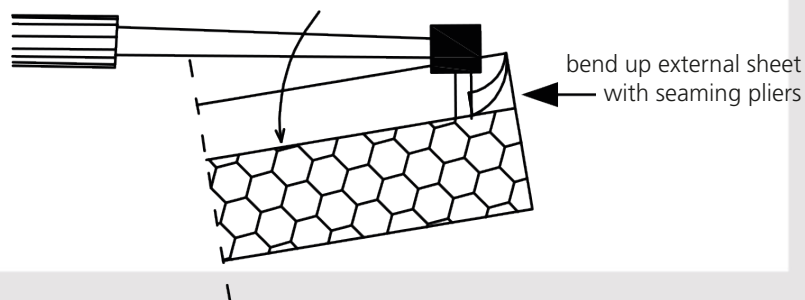
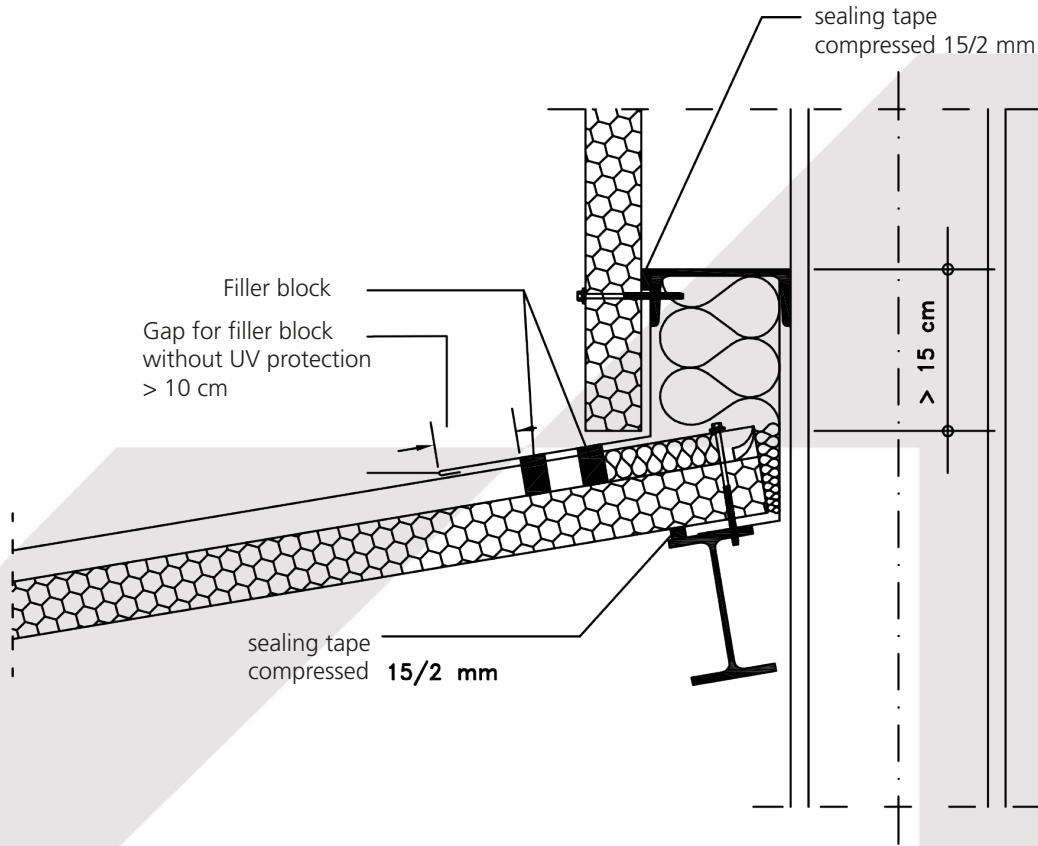
KT-FIR 04 /+ Code						
Thickness of insulation	30	40	50	60	80	100
Code	3	4	5	6	8	10
E	244	244	244	244	244	244
F	160	160	160	160	160	221
Z	549	549	549	549	549	610

KT-FIR 10

ridge cover (interior)

Cut: 305 mm

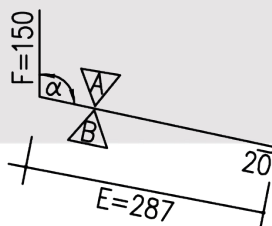


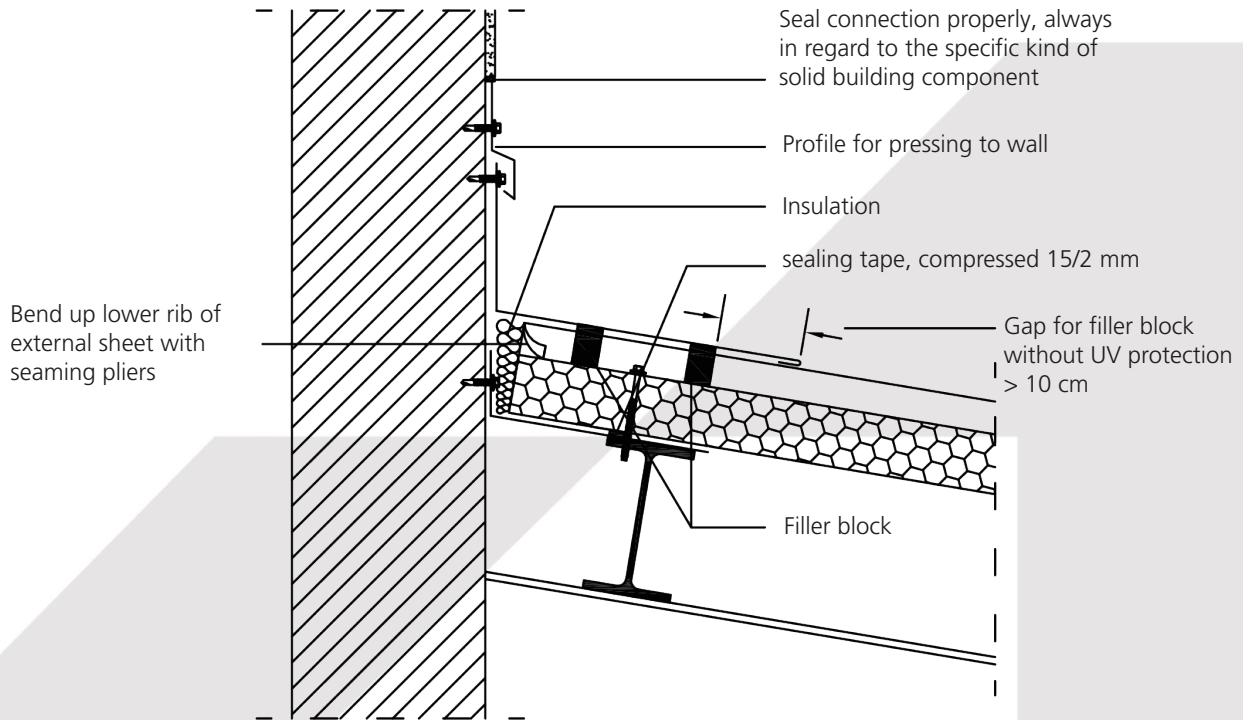


Subject to change without further notice * As of August 2020

KT-FIR 04

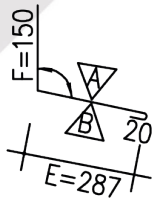
Connection profile
for roof
Cut: 457 mm





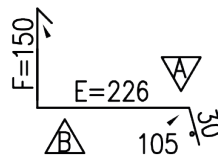
KT-DAN 01

Roof connection profile
Cut: 457 mm



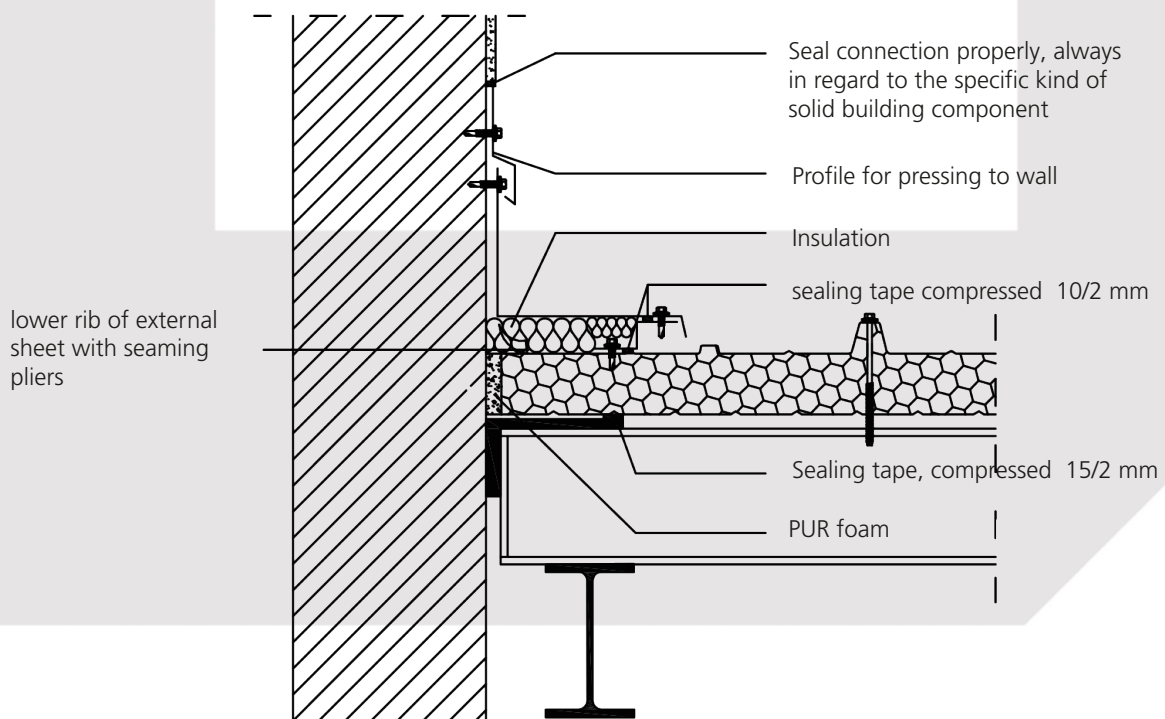
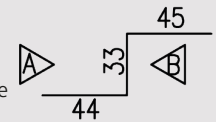
KT-DAN 09

Roof connection profile
Cut: 406 mm



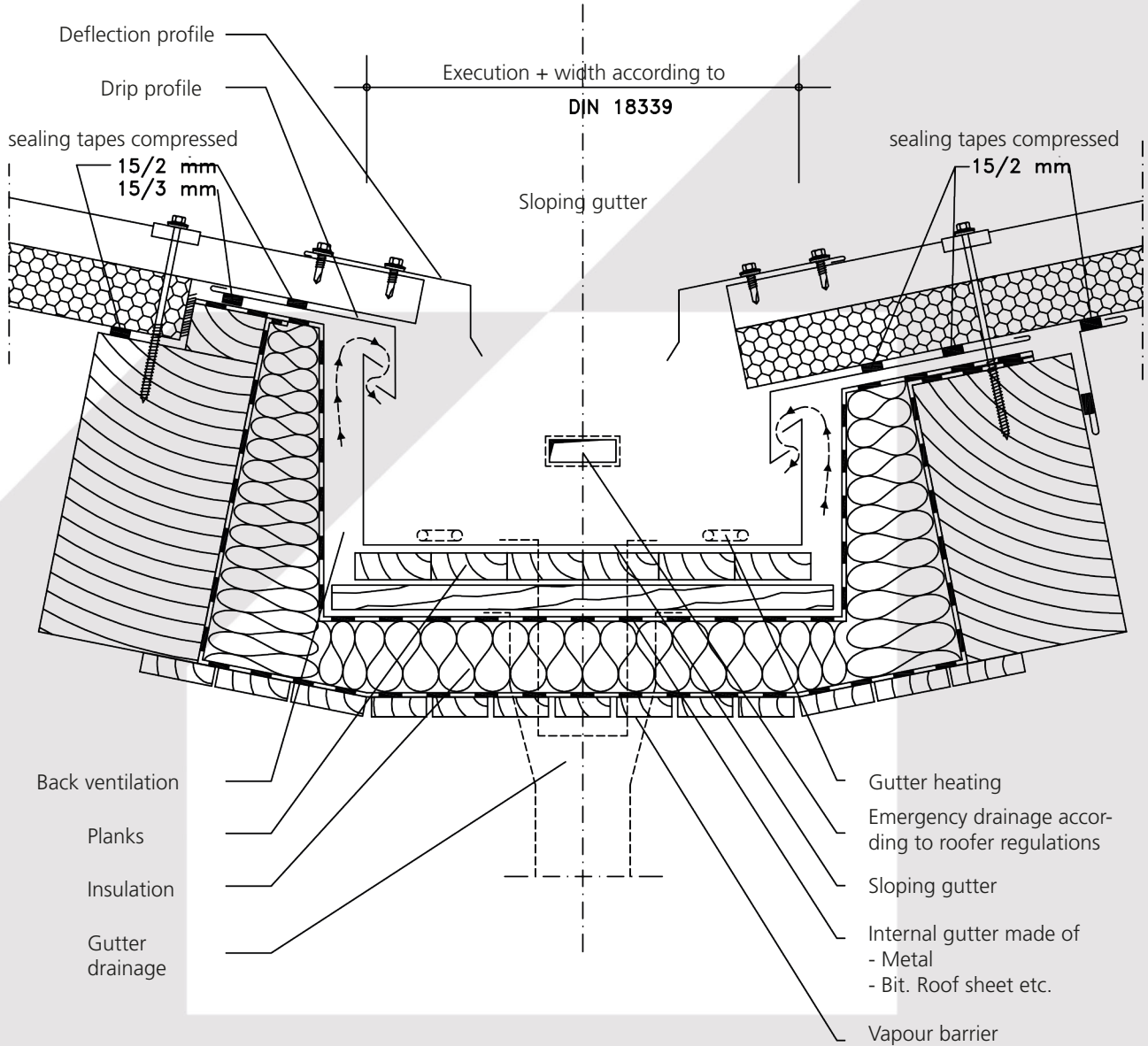
KT-ORT 07

Compensation profile
Cut: 122 mm



VARIANT 1

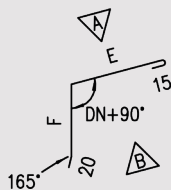
VARIANT 2



KT-TRA 05

Deflection profile

Cut: s.Tab. mm



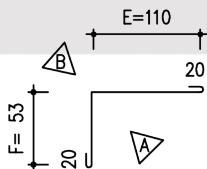
KT-TRA 05/+ Code

Thickness of insulation	30	40	50	60	80	100
Code	3	4	5	6	8	10
E	108	139	129	119	160	140
F	60	70	80	90	110	130
Z	203	244	244	244	305	305

KT-ORT 12

Covering profile

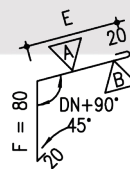
Cut: 203 mm



KT-TRA 03

Drip profile

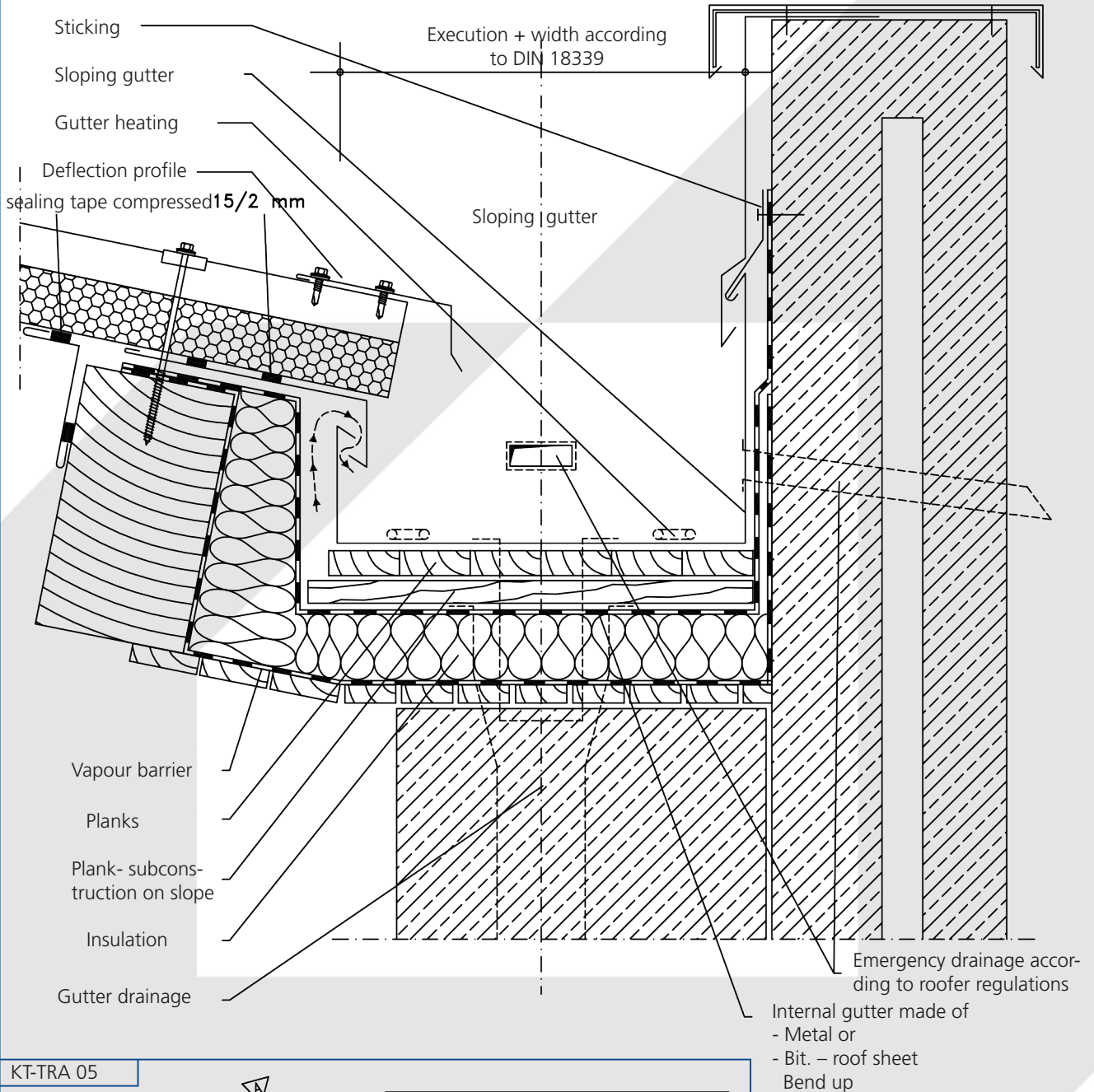
Cut: s.Tab. mm



KT-TRA 03/+ Code

Code	1	2
E	124	185
F	80	80
Z	244	305

Subject to change without further notice * As of August 2020

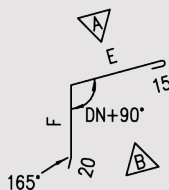


Subject to change without further notice * As of August 2020

KT-TRA 05

Deflection profile

Cut: s.Tab. mm



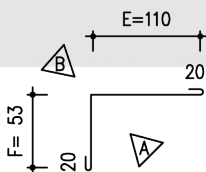
KT-TRA 05/+ Code

Thickness of insulation	30	40	50	60	80	100
Code	3	4	5	6	8	10
E	108	139	129	119	160	140
F	60	70	80	90	110	130
Z	203	244	244	244	305	305

KT-ORT 12

Covering profile

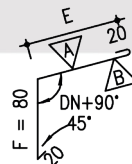
Cut: 203 mm



KT-TRA 03

Drip profile

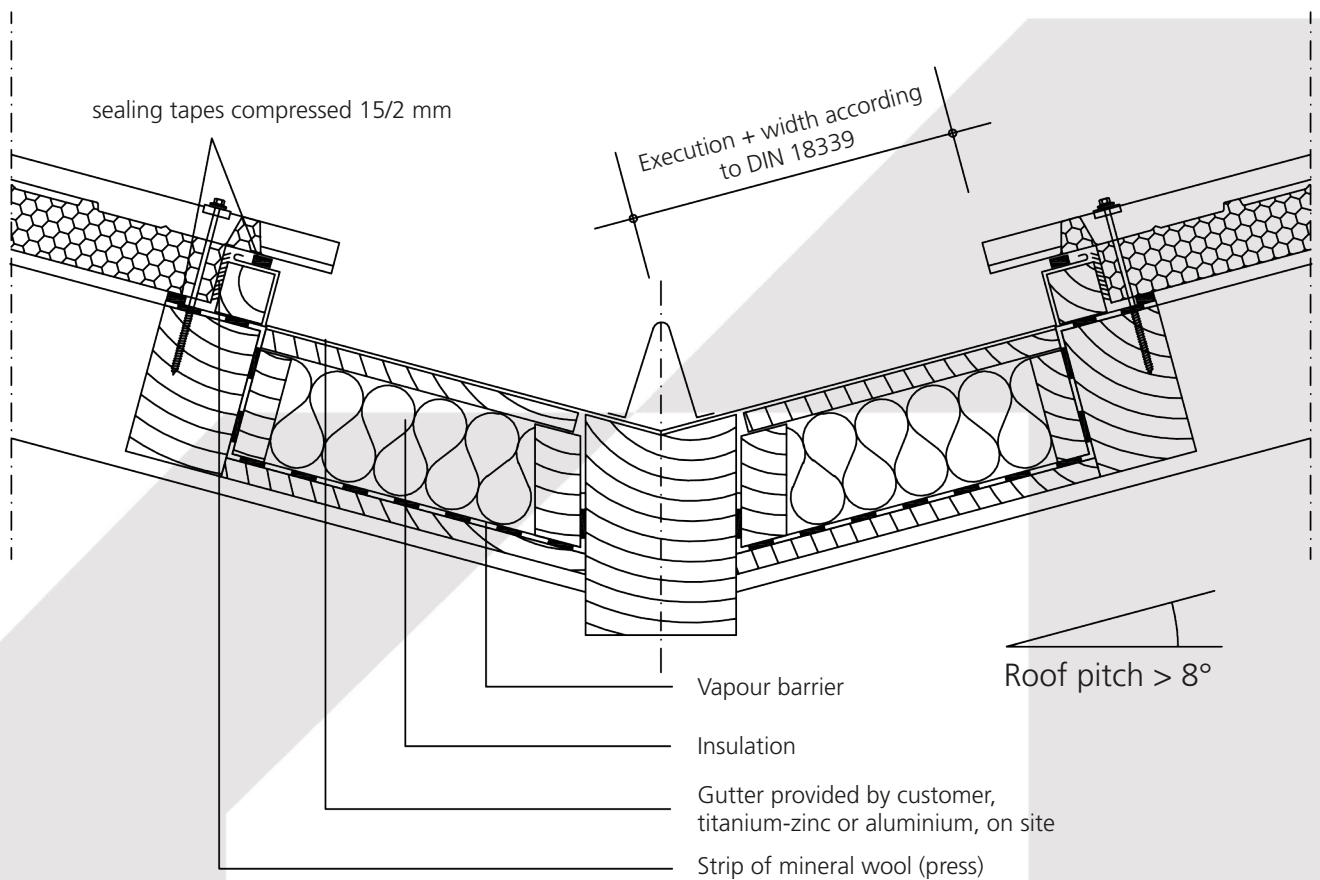
Cut: s.Tab. mm



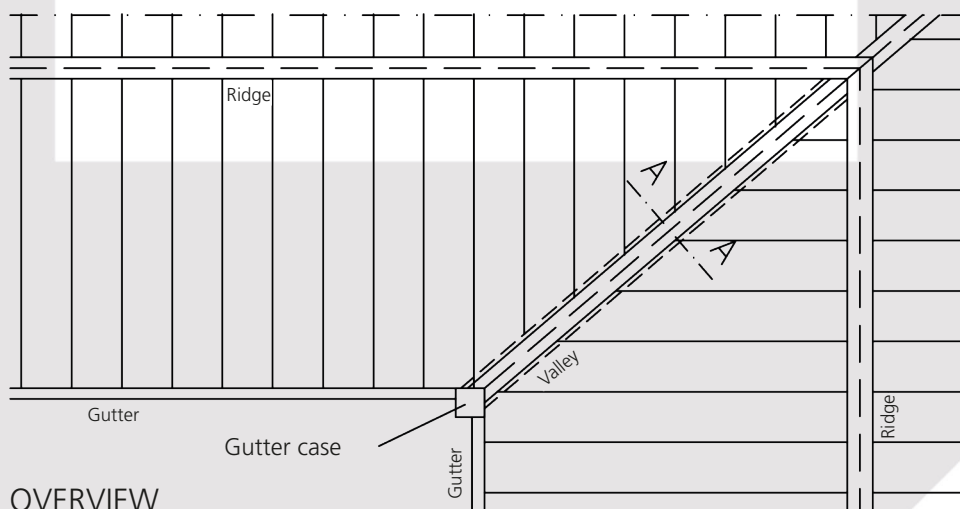
KT-TRA 03/+ Code

Code	1	2
E	124	185
F	80	80
Z	244	305

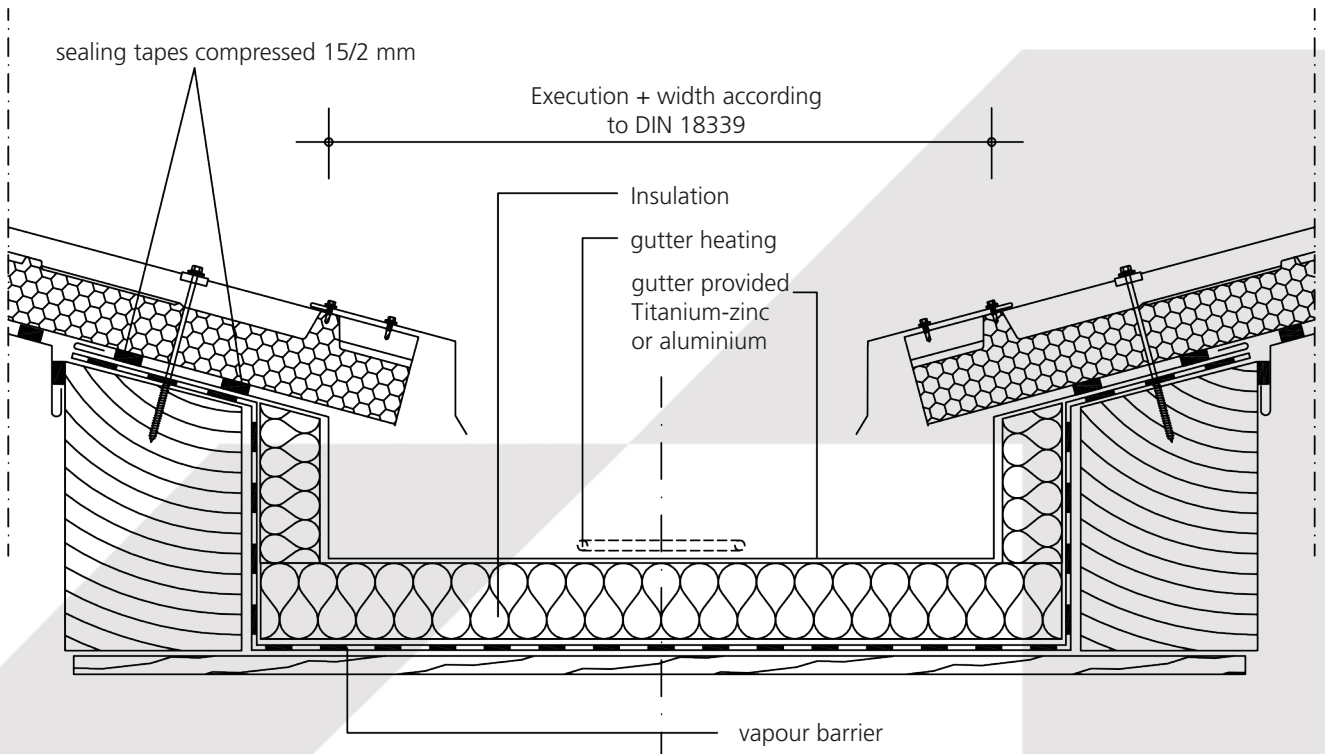
Emergency drainage according to roofer regulations
Internal gutter made of
- Metal or
- Bit. - roof sheet
Bend up



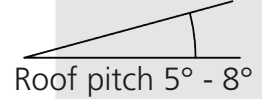
CUT A - A



Subject to change without further notice * As of August 2020



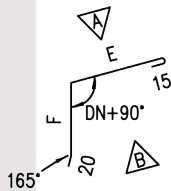
CUT A - A



KT-TRA 05

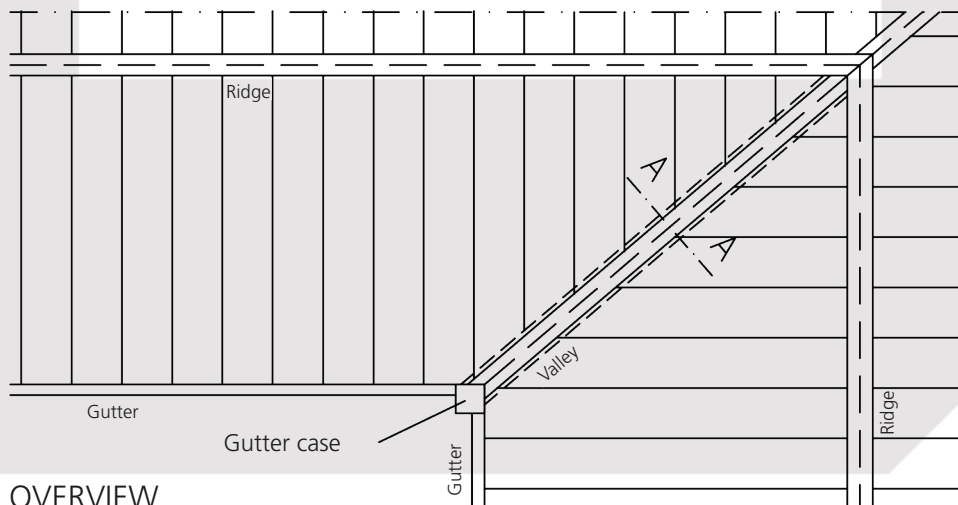
Deflection profile

Cut: s. Tab. mm



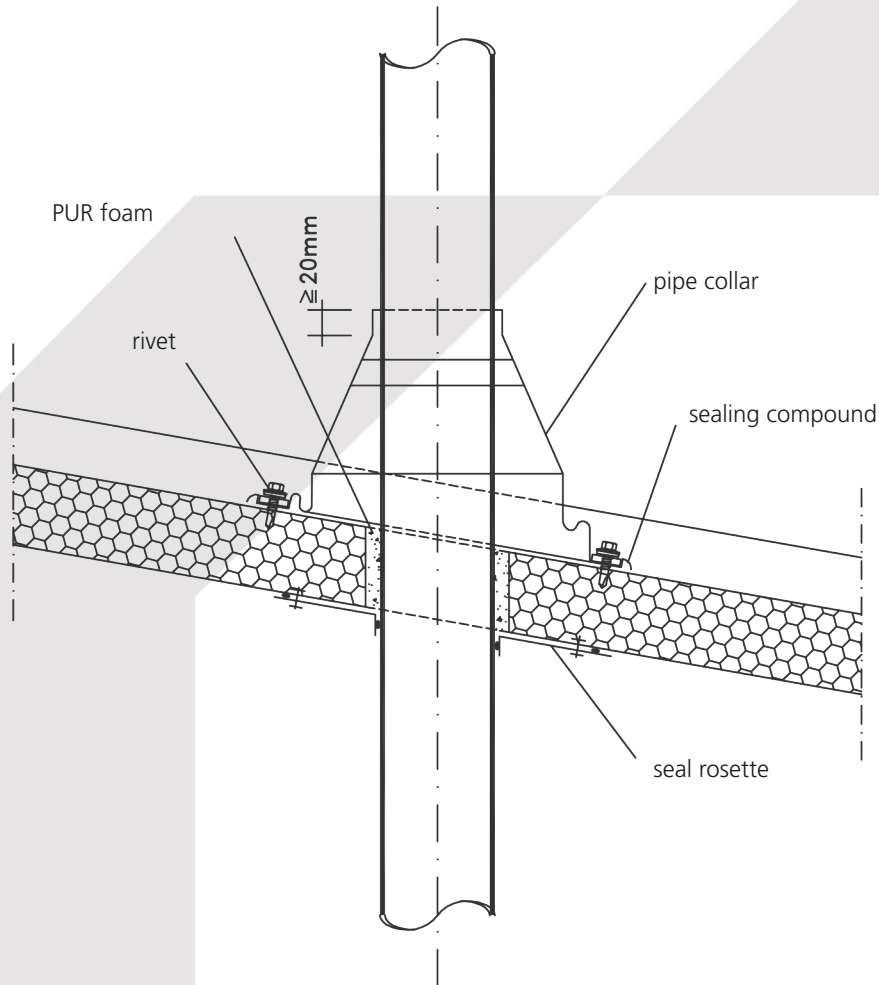
KT-TRA 05/+ Code

Thickness of insulation	30	40	50	60	80	100
Code	3	4	5	6	8	10
E	108	139	129	119	160	140
F	60	70	80	90	110	130
Z	203	244	244	244	305	305

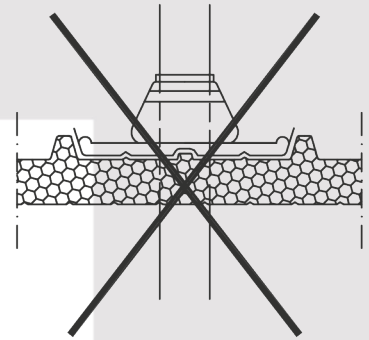


OVERVIEW

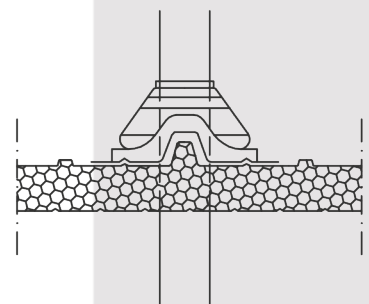
Subject to change without further notice * As of August 2020

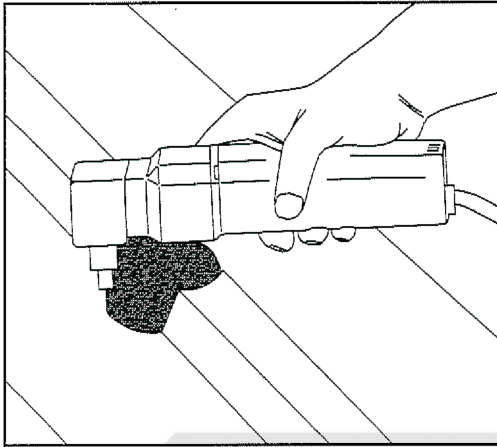


NOT LIKE THIS ...

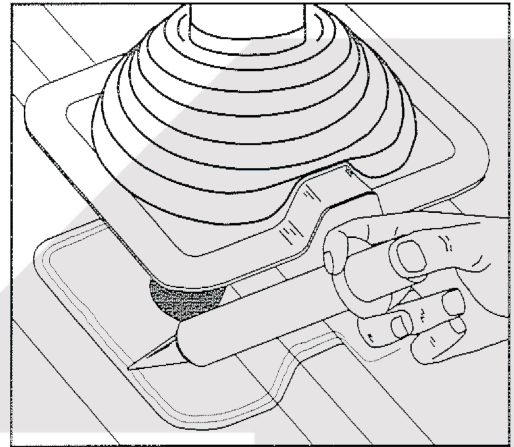


... LIKE THIS!

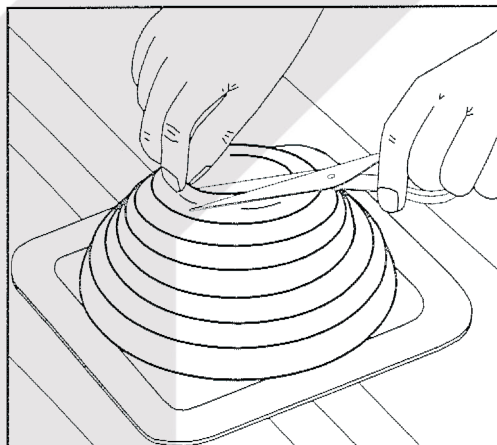




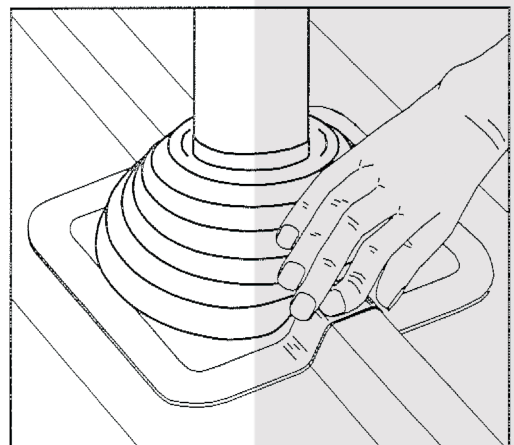
- 1** Provide pipe opening. Always install the pipe collar at the high rib to prevent obstructing the water flow.



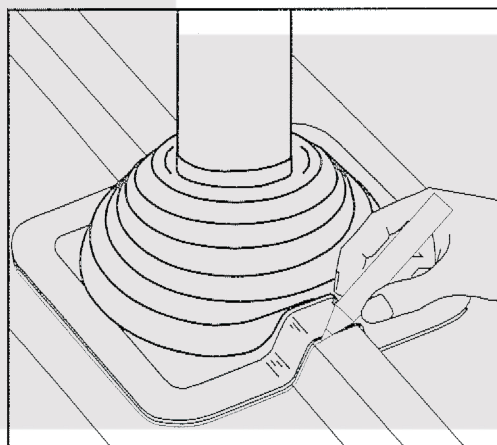
- 4** Apply sealing compound within the markings.



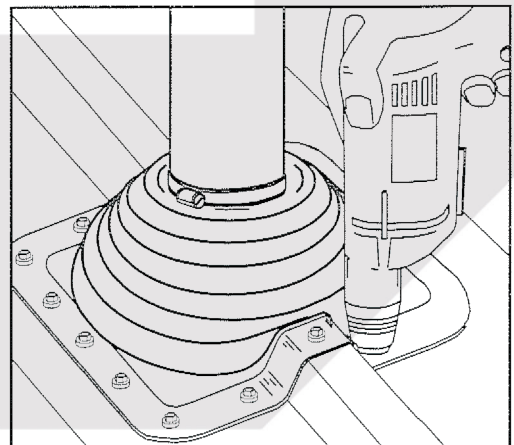
- 2** Adjust collar at the pipe. Cut the opening min. 25 mm smaller than the diameter of the pipe, in order to get an overlapping of about 20 mm at the pipe.



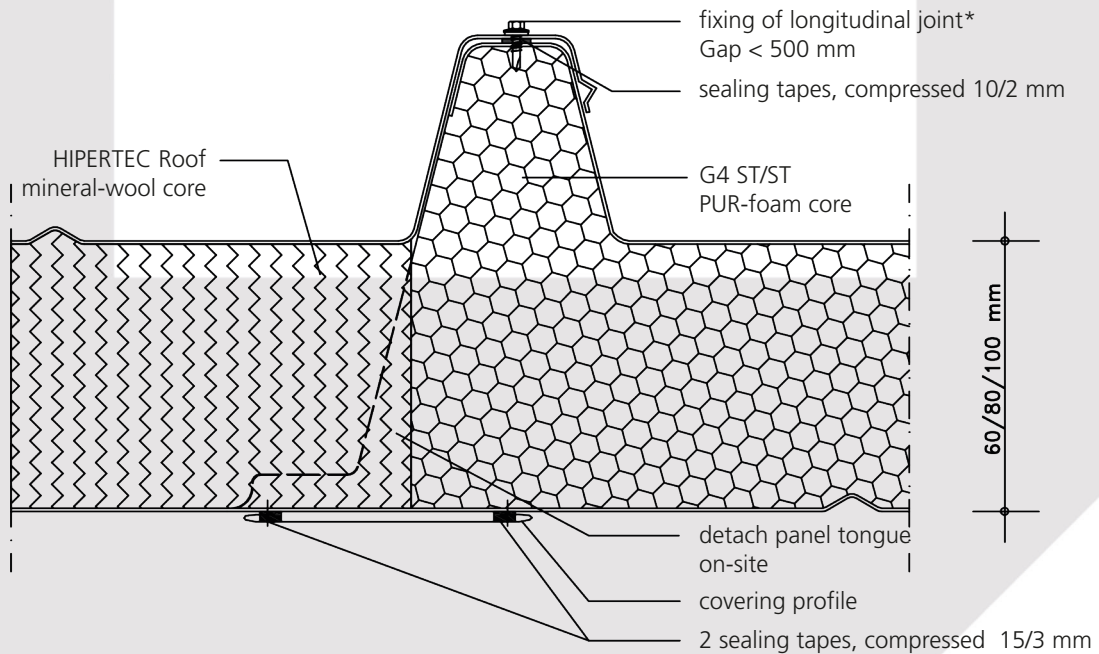
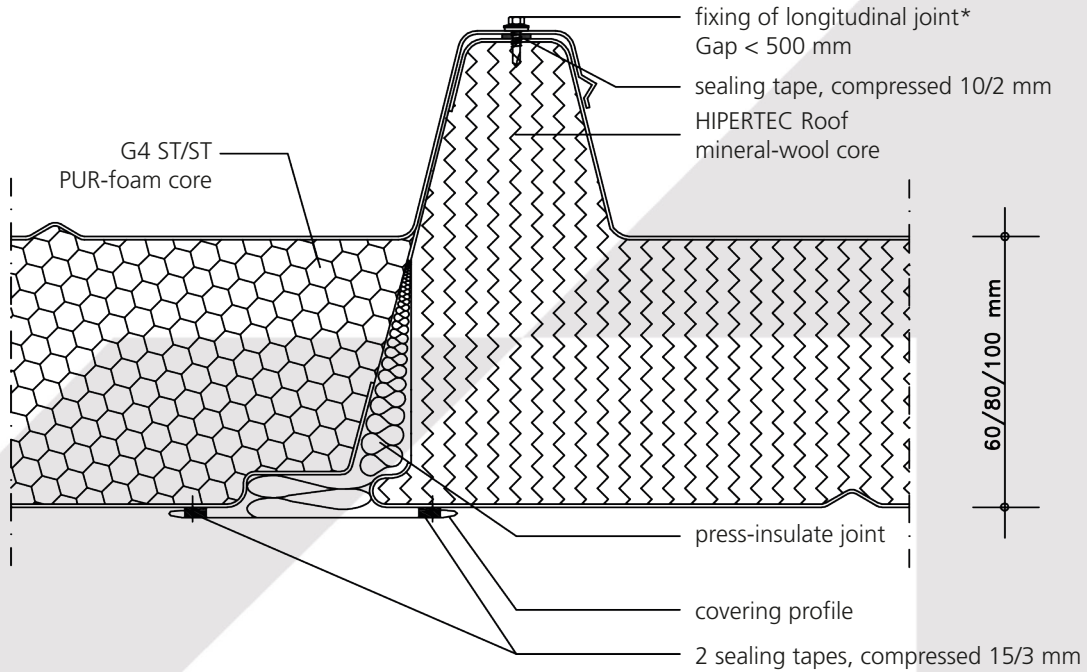
- 5** Position the collar press onto the surface of the roof profile.



- 3** Pull the pipe collar over the pipe – lubricate with soap if necessary. Adjust collar at roof profile and mark at the outer edge.



- 6** Screw together pipe collar and the G4 external sheet; distance between screws = 50 mm. Assemble pipe bracket



* Screw with non-threaded area

Subject to change without further notice * As of August 2020